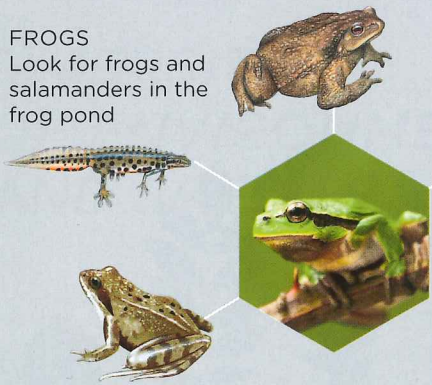
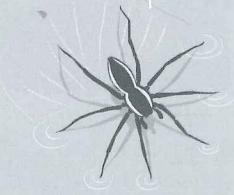


**FROGS**  
Look for frogs and salamanders in the frog pond



**ALDER MARSH**  
The alder marsh is home to the lesser spotted woodpecker and agile frog

**BOG**  
On and around the moss you can see bulrushes, edible snails and raft spiders



**RIVER ENVIRONMENT**  
In the autumn, Sea trout swim to their spawning grounds



ENTRANCE  
HÄLLEVIK

SVABEHOLM FOREST

STENSHUVUD NORTH

ALDER MARSH

MOSS

ANNORLUNDA

ENTRANCE NATURUM  
STENSHUVUD

KORTELSHUVUD

ENTRANCE RÖRUM

DOLLABÄCKEN

TRINTEKULL

KLOVEKULL

SANDANA

ENTRANCE  
RÖRUM

ENTRANCE  
HÄLLEVIK

ENTRANCE  
STENSHUVUD

ENTRANCE  
HILL-FORT

ENTRANCE  
ANNORLUNDA

ENTRANCE  
ANNORLUNDA

ENTRANCE  
STENSHUVUD

ENTRANCE  
TRINTEKULL

ENTRANCE  
KLOVEKULL

ENTRANCE  
SANDANA

ENTRANCE  
RÖRUM

**CAMPING FOR TENTS**  
Camping in tents is permitted here 4 pm-10 am.

**THE VIEW**  
is magnificent 97 m above sea level

STENSHUVUD LIGHTHOUSE

**HORNBEAM FOREST**  
Hike through one of Sweden's biggest hornbeam forests.

**HEATH**  
a wonderful place for the sand lizard

SWIMMING PLACE

**WET MEADOW**  
Enjoy the beautiful orchids

**DRY MEADOW**  
attracts butterflies such as the small copper

**SANDY HEATH**  
The endangered tawny pipit likes it here

**KEY TO SYMBOLS**

- ENTRANCE
- GOAL POINT
- WOODLAND
- OPEN LAND
- MARSH
- ROAD
- MAIN PATH
- FOOTPATH
- TRAIL FOR WHEELCHAIRS
- FOOTPATH: EASY
- FOOTPATH: DIFFICULT
- DISTANCE
- TIME REQUIRED
- ENTRANCE
- INFORMATION
- CAFÉ
- OUTLOOK POINT
- PICNIC AREA
- BBQ PLACE
- CAR PARK
- EARTH CLOSET
- WC
- SWIMMING PLACE
- WASTE BINS
- CAMPING FOR TENTS
- FOR DISABLED PERSONS

**FOOTPATHS**

- STENSHUVUD LOOP
  - HÄLLEVIK LOOP
  - KORTEL LOOP
  - SEA LOOP
  - ARBORETUM LOOP
- |  |  |  |
|--|--|--|
|  |  |  |
|  |  |  |
|  |  |  |
|  |  |  |
|  |  |  |

